

Geospatial Digital Tools: Best Practices and Opportunities to Improve Laboratory Services

Seminar Description

Knowing where laboratory capacity and services exist is a foundational piece of data to support equitable, quality, and efficiency in healthcare. While this type of data is simple in nature, its availability and use have been limited by siloed efforts, limited accessibility, and technical capacity. InSTEDD, Mériieux Foundation, and Savics are leading an interactive session on laboratory mapping, focusing on two parts:

1. Experts **sharing recent experiences** in collecting and managing data on laboratories across Africa. Further, innovators will share novel approaches in crowdsourcing and how to use GIS data and common tools to evaluate coverage, capacity, and opportunities to enhance a network of locations.
2. Additionally, there will be **an interactive group design-thinking exercise**, where you can meet directly with GIS experts and other stakeholders with similar challenges, to discuss your projects, and explore opportunities for how to move forward and increase your impact.



Data Collection

Digital forms and tools for assessing laboratories



Manage / Share GIS Data

To manage and keep data current, while simplifying sharing



Data Use and Planning Tools

For reports, analysis, establishing portals, & planning tools

Presenters

Scotts Teesdale, InSTEDD

Xavier Morelle, SAVICS

Olajumoke Arinola, SAVICS

Nicolas Steenkeste, Fondation Mériieux

Odile Ouwe Missi Oukem, Fondation Mériieux

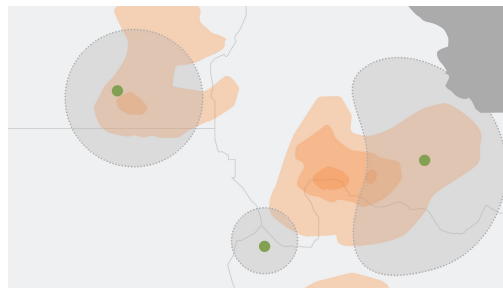
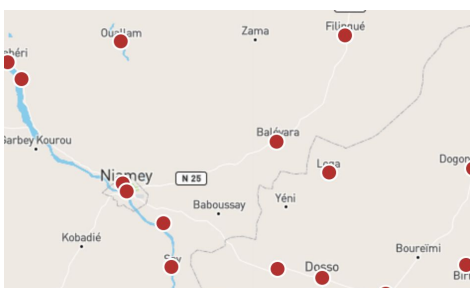
Details

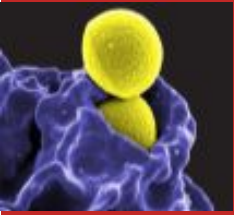
Date: Tuesday, 11 December 2018

Time: 17:00-20:00

Location: FCT

Sponsors: ASLM & BMGF





Geospatial Digital Tools: Best Practices and Opportunities to Improve Laboratory Services

Agenda

Part 1: Implementers	
Nlger Lab Mapping Exercise	Summary of recent work, best practices, lessons learned, and ongoing challenge.
Planwise - Geospatial Planning and Optimization & Ethiopia Experience	A novel approach to using location data for better planning and system optimization.
Savics - Crowdsourced Data	A description of a novel approach to collecting and using location data.
Q/A for Presenters	
Short Break, Re-arrange for Part 2.	Bathroom Break, Move to Small Groups
Part 2: Evaluate The Landscape	
Discuss Challenges, Share Experiences, Explore Different Perspectives. Groups: <ul style="list-style-type: none"> ○ Data Collection ○ Update / Curation ○ Data Use / Sharing 	Create conversations where the group shares their experience and explores common challenges.
Break & Moderators Complete Groupings	Take a break. Sort out the groupings.
Part 3: Breakout Sessions	
Break into Groups Around Focus Areas.	Moderators share what the groups are.
Review Progress / Opportunities - Design Concepts and Solutions Around Challenges.	A participatory session to break into groups and help participants make meaningful progress towards one of the above priorities
Share w/ Group, Get Feedback From Group	Groups share their concepts (Elevator Pitch), and get feedback from the group. Groups can then make plans to move forward. (e.g., follow-up meetings, proposals, implement, etc.)